



Laura MacArthur Elem.

Year Built – 1914

Additions – 1957 (N. Wing), 1994 (elevator)

Size (sf) – 155,406

10/06 Enrollment – 474

Site area – 3.83 acres

Grades – K-5

Laura MacArthur is an older traditional school house building that was added on to in order to accommodate a greater student population. The addition was not integrated well with the existing structure and resulted in a fragmented facility plan. The building, while well maintained, needs updating throughout to meet current education facility recommendations.

Some of the classrooms should be updated in regards to amenities. The cafeteria/kitchen/serving space is undersized and is need of a significant updating and refurbishing. The administration area is adequately sized but offers significant challenges in the monitoring of the front entrance.

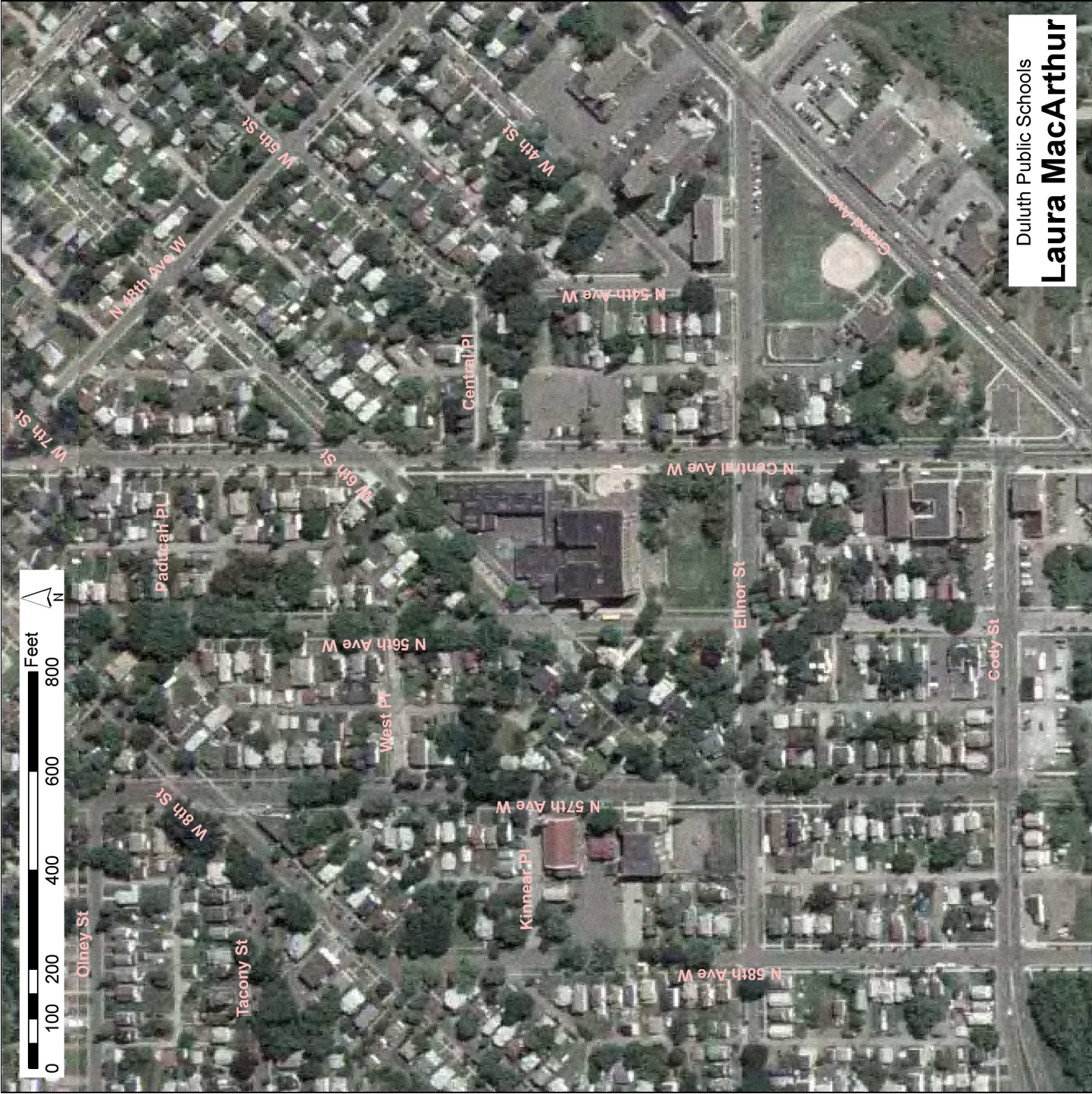
There is a significant amount of community use at this facility due to the traditional and non-traditional programs being delivered. This would include several district-wide specialized programs now being housed in this location. Many of these programs require access to the appropriate spaces throughout the school day. The location of those programs within the facility and the specific and specialized needs of some of the programs, in addition to the continual access, offers a number of challenges.

The educational support spaces like teacher planning centers and student break out areas are not present and would require significant facility changes to accommodate them. The site is undersized and does not allow for optimal safety in regards to site traffic circulation. While there is some green space and hard surface play area, these areas could surely be more suitable for elementary grade students.

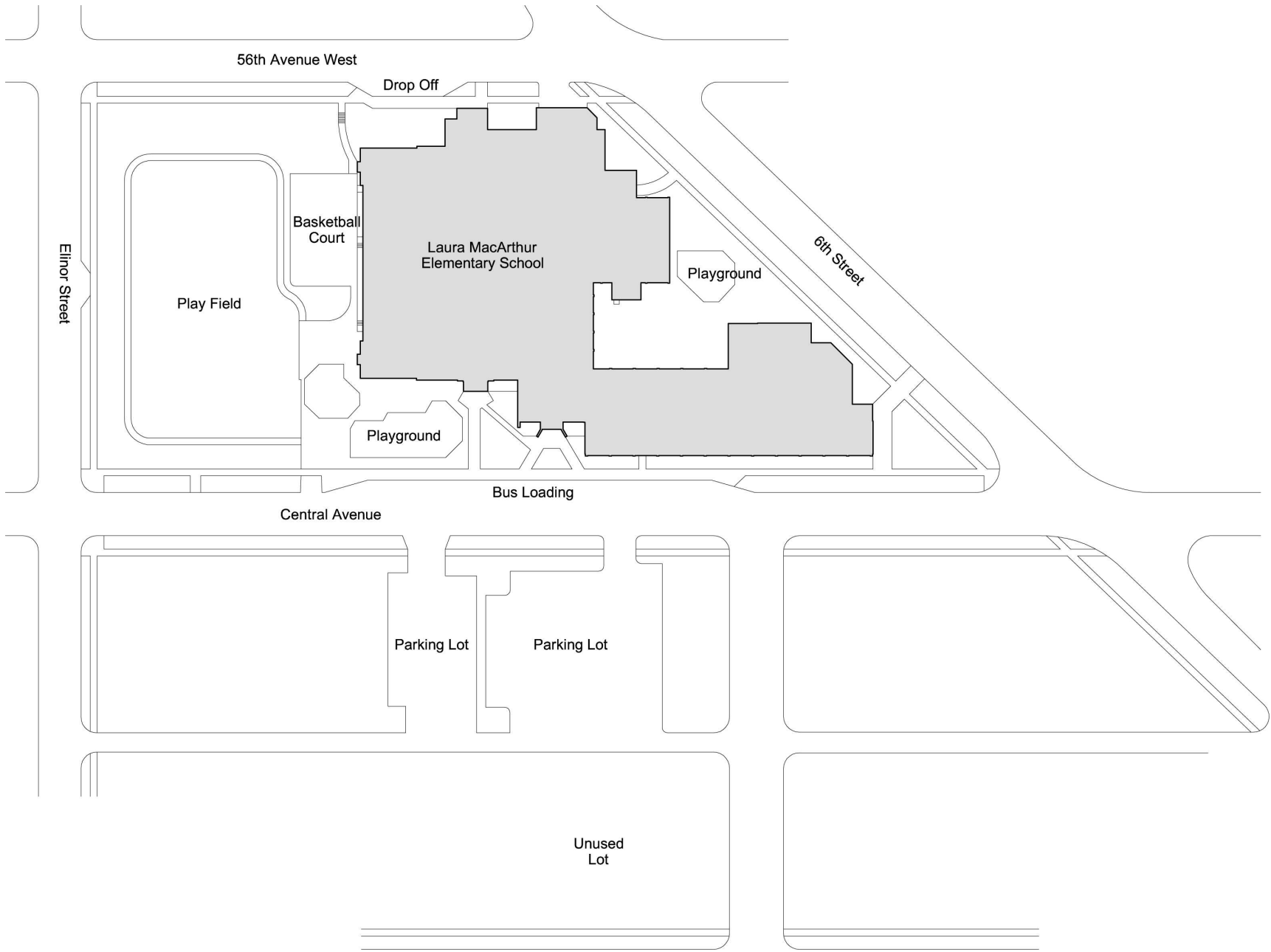
Summary of Educational Adequacy Requirements - Laura MacArthur Elementary

Key Program Areas		Meets requirement	Does not meet requirement but acceptable	Not acceptable	Cost to remedy
General	1.0 Classroom size	X			
	2.0 Cafeteria Size/Serving Configuration			X	\$ 864,000
	3.0 Security/Supervision			X	\$ 236,250
	4.0 Science Lab (Quantity)		X		
	5.0 Art		X		
	6.0 Physical Attributes			X	\$ 165,000
Support	7.0 Teacher Planning Centers (TPC)		X		
	8.0 Student Break-out Areas		X		
	9.0 Gymnasiums	X			
	10.0 Auditoriums		X		
Site	11.0 Site Suitability - Amenities			X	TBD
	12.0 Site Suitability - Circulation			X	TBD
	13.0 Parking Capacity		X		

Total \$ 1,265,250



Duluth Public Schools
Laura MacArthur



Laura MacArthur