



Lincoln Park School

Year Built – 1889

Additions – 1930 (classrooms), 1951 (elem.)
 1959 (pool), 1966 (gym), 1979 (elevator),
 1992 (connection), 1993 (kitchen), 1994
 (classrooms), 1999 (B&G club)

Size (sf) – 170,596

10/06 Enrollment – 451

Site area – 2.75 acres

Grades – K-8

Lincoln Park is a series of educational building pieces from different eras that are crammed onto a sloping site. From an educational facility viewpoint this building ranges from awful to adequate. Some parts of the eastern “V” shaped structure and newer media center/cafeteria addition are well planned and provide for sufficient space in comparison to current facility recommendations. Even some of the other spaces, like the pool and the gymnasium for example, are acceptable as stand alone elements. The inter-connections of all of these pieces provide a level of concern. Circulation patterns are confusing, difficult to supervise, and extremely inefficient. The administration area is centrally located, but remains a long meandering corridor away from the visitor entrance.

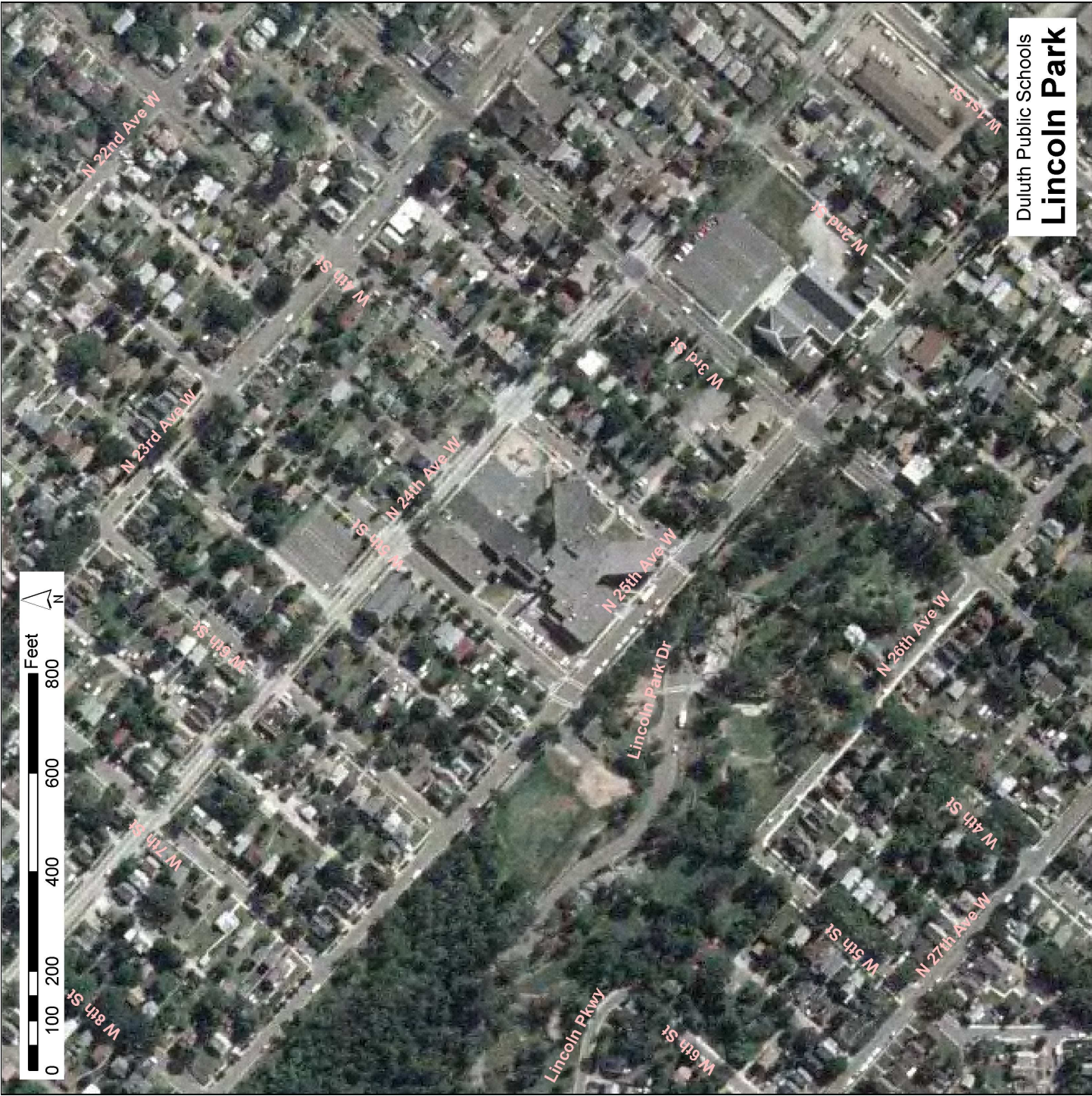
Most of the general purpose classroom spaces are adequately sized, but lack equipment and storage. Student break-out areas are available in only portions of the building and teacher planning centers are available but scarce.

The site is very small for size of the building and the amount of students. There are limited soft or hard surface play areas and on-site parking is very limited. Most staff and visitors park on the street throughout the neighborhood. The front entrance of the building is difficult to find and should be clearly identifiable.

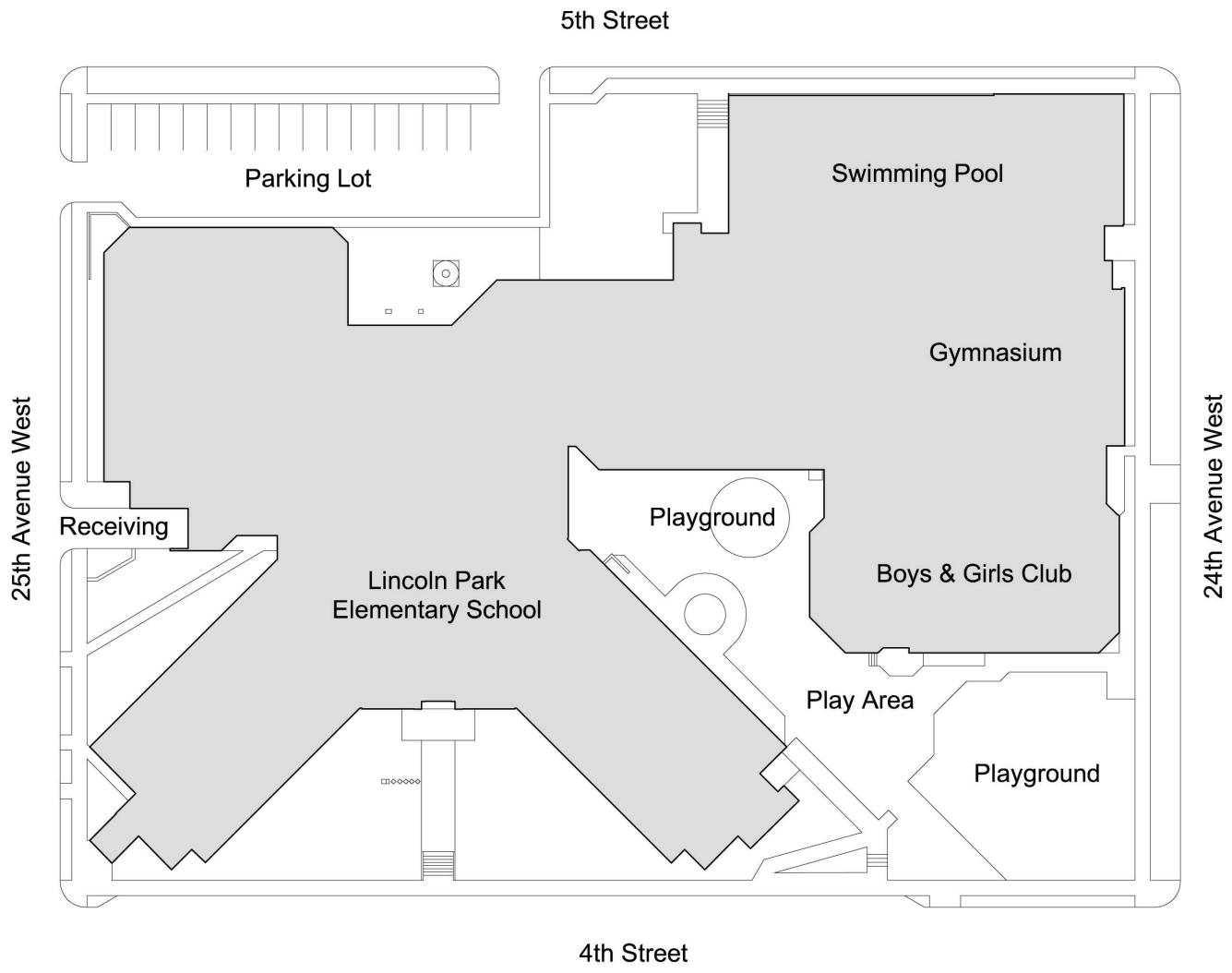
Summary of Educational Adequacy Requirements - Lincoln Park

Key Program Areas		Meets requirement	Does not meet requirement but acceptable	Not acceptable	Cost to remedy
General	1.0 Classroom size	x			
	2.0 Cafeteria Size/Serving Configuration	x			
	3.0 Security/Supervision			x	\$ 985,500
	4.0 Science Lab (Quantity)		x		
	5.0 Art		x		
	6.0 Physical Attributes			x	\$ 250,000
Support	7.0 Teacher Planning Centers (TPC)		x		
	8.0 Student Break-out Areas		x		
	9.0 Gymnasiums		x		
	10.0 Auditoriums		x		
Site	11.0 Site Suitability - Amenities			x	TBD
	12.0 Site Suitability - Circulation			x	TBD
	13.0 Parking Capacity			x	TBD

Total \$ 1,235,500



Duluth Public Schools
Lincoln Park



Lincoln Park