

Congdon Park Elementary



Option 1

Aerial Photograph



John Ivey Thomas Associates
AIA Architects
11/9/09

Congdon Park Elementary



Option 1
Site Plan
Scale 1" : 20'



John Ivey Thomas Associates
AIA Architects
11/9/09

Congdon Park Elementary



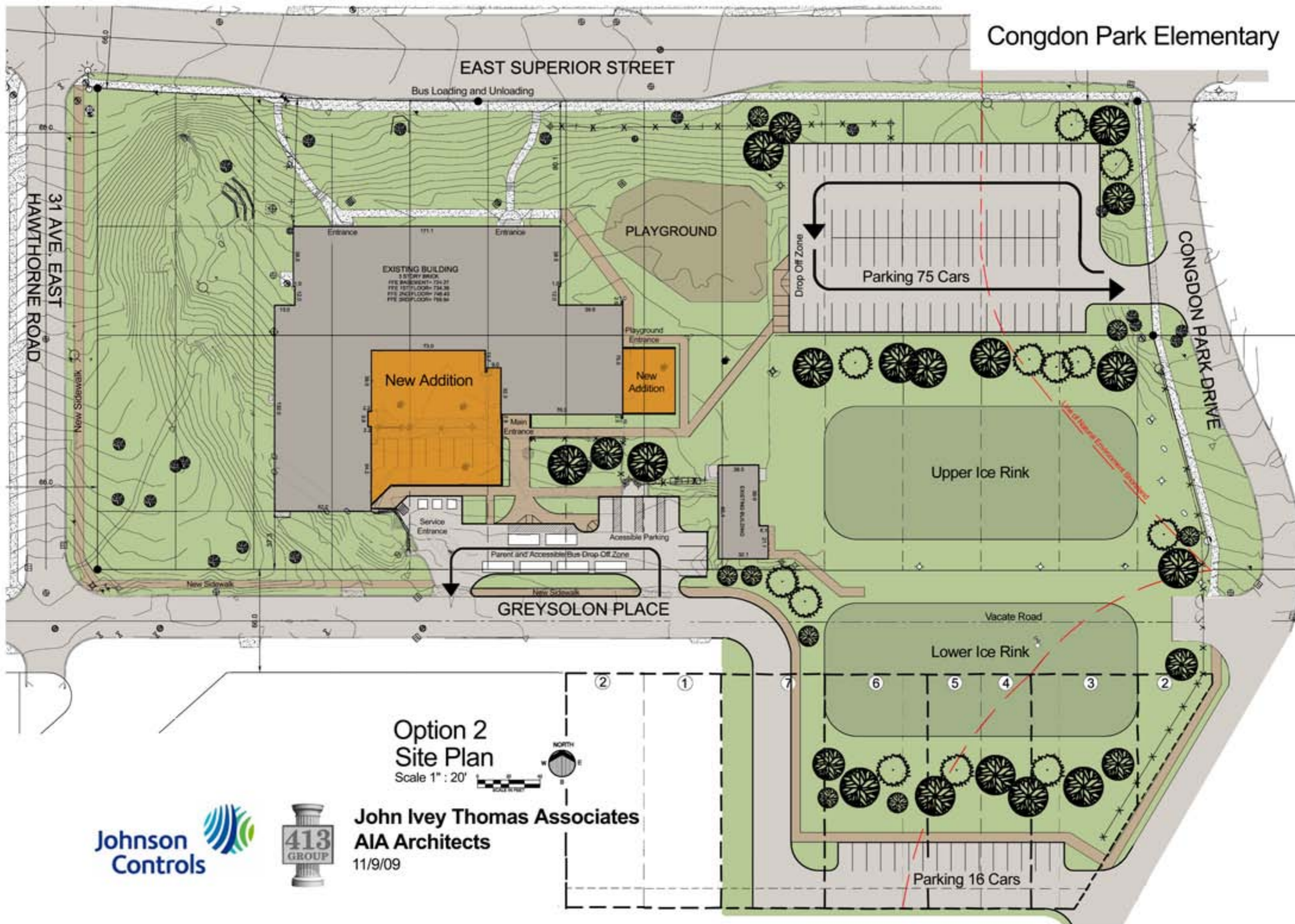
Option 2

Aerial Photograph



John Ivey Thomas Associates
AIA Architects
11/9/09

Congdon Park Elementary



EAST SUPERIOR STREET

Bus Loading and Unloading

31 AVE. EAST
HAWTHORNE ROAD

PLAYGROUND

EXISTING BUILDING
3 STORY BRICK
FFE BASEMENT+ 124.21
FFE 1ST FLOOR+ 124.38
FFE 2ND FLOOR+ 124.54
FFE 3RD FLOOR+ 124.71

New Addition

New Addition

Parking 75 Cars

CONGDON PARK DRIVE

Upper Ice Rink

GREYSOLON PLACE

Lower Ice Rink

Option 2
Site Plan

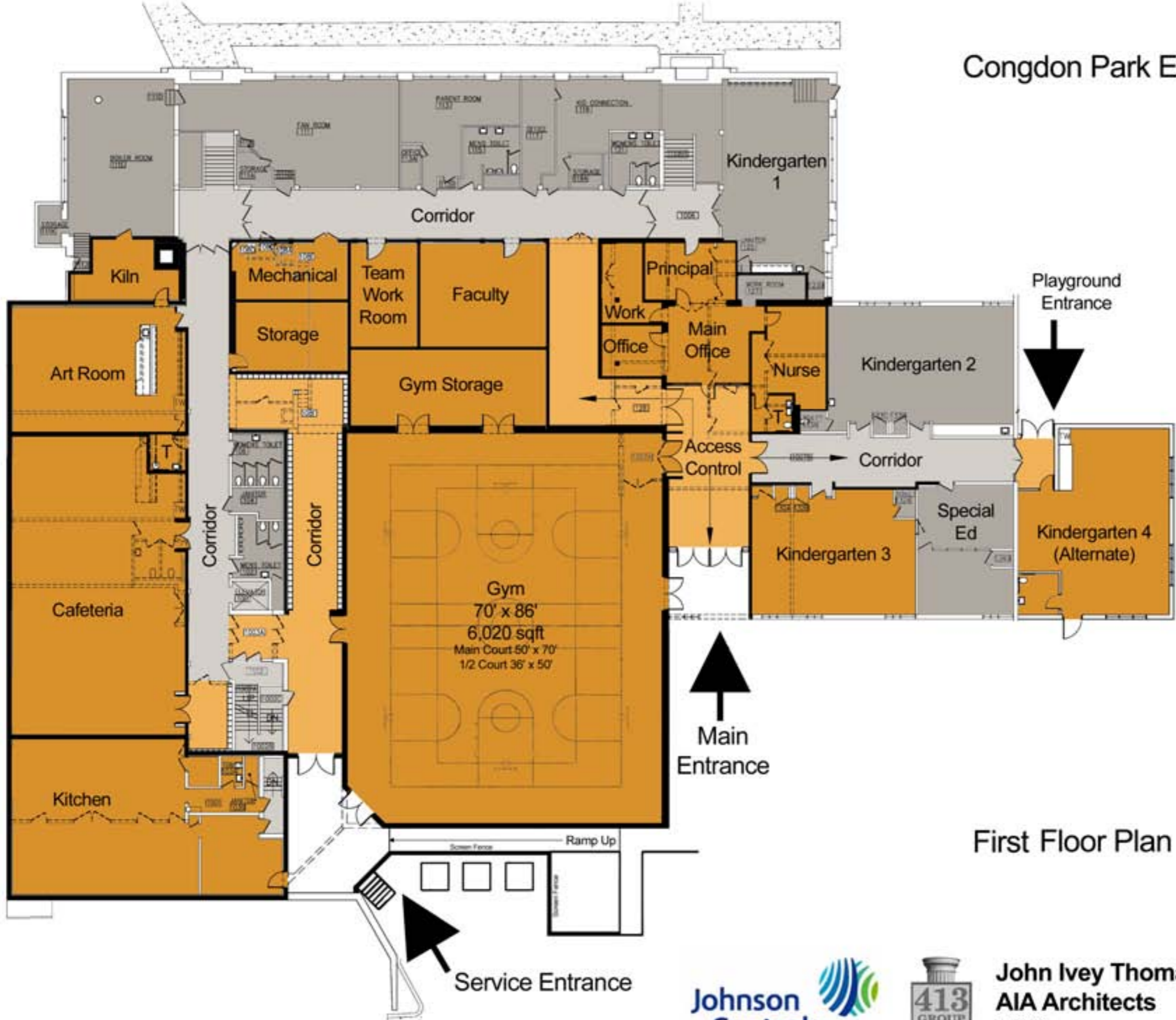
Scale 1" : 20'



John Ivey Thomas Associates
AIA Architects
11/9/09

Parking 16 Cars

Congdon Park Elementary

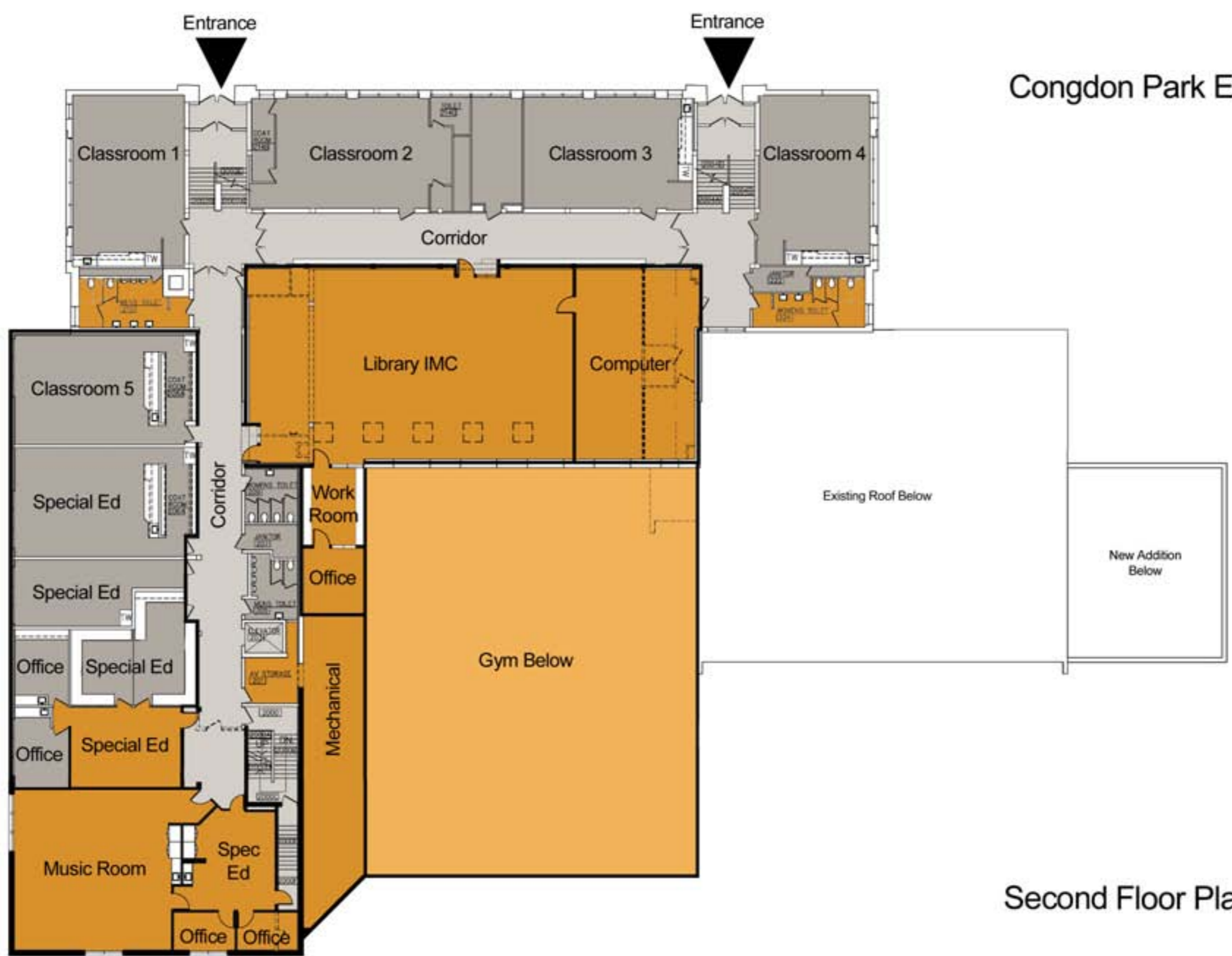



First Floor Plan



John Ivey Thomas Associates
AIA Architects
11/9/09

Congdon Park Elementary

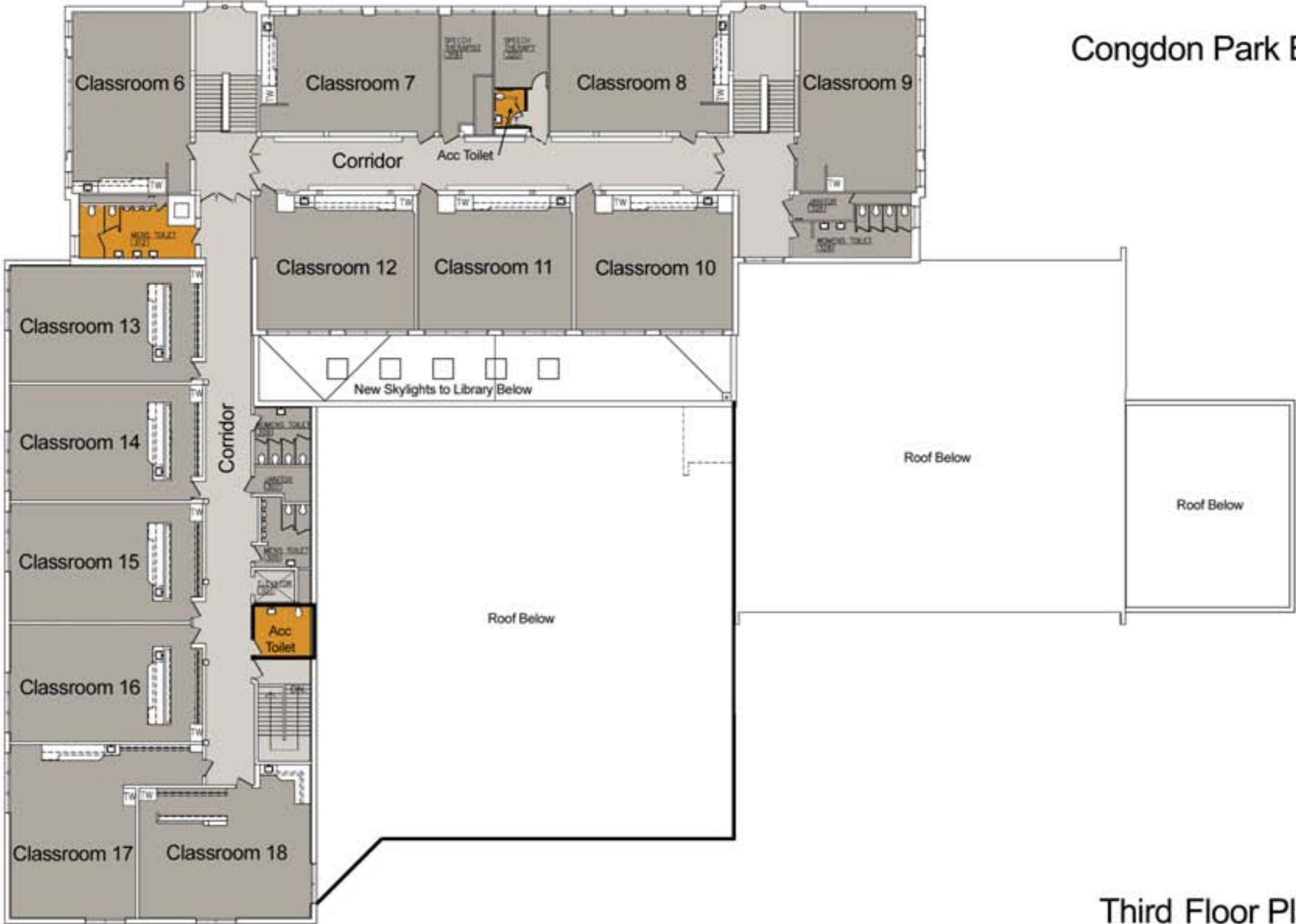


Second Floor Plan 



John Ivey Thomas Associates
AIA Architects
11/9/09

Congdon Park Elementary



Third Floor Plan 



John Ivey Thomas Associates
AIA Architects
11/9/09