



*Independent School District #709
Eastern High School*



ARCHITECTURAL
RESOURCES • INC.

Eastern High School

Design Review

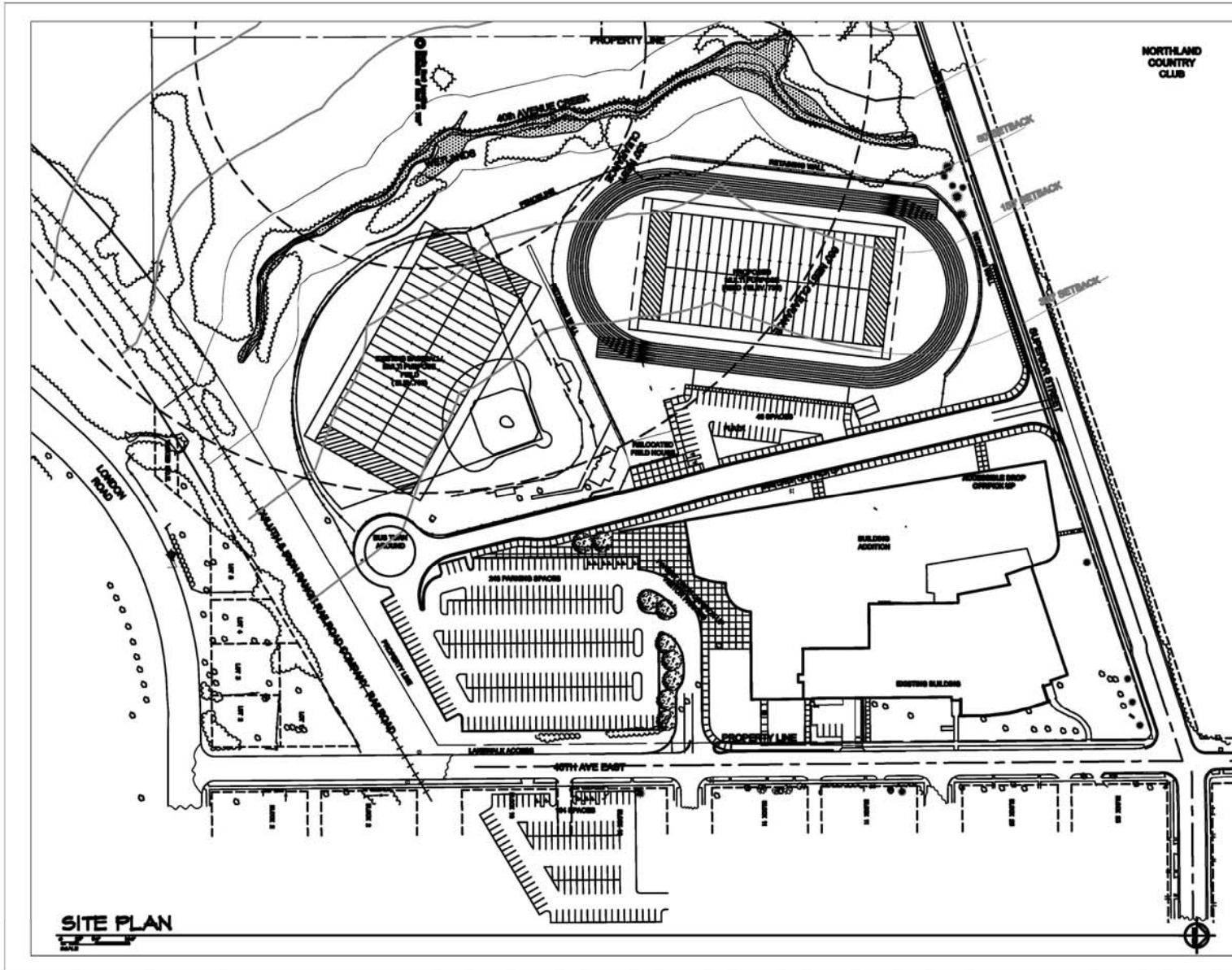
April 13, 2009



**Independent School District #709
Eastern High School**



ARCHITECTURAL
RESOURCES • INC.



SITE PLAN

**NORTHLAND
COUNTRY
CLUB**



JOHNSON CONTROLS, INC.
PROFESSIONAL SERVICES GROUP
487 Ames Boulevard
Duluth, MN 55811
TEL: 715-727-6866



**ARCHITECTURAL
RESOURCES INC.**

- ARCHITECTURE
 - ENGINEERING
 - LANDSCAPE ARCHITECTURE
 - INTERIOR DESIGN
- WEB SITE: www.artinc.com
704 EAST HOWARD STREET
DULUTH, MINNESOTA 55814
PHONE 218-263-6868
FAX 218-722-6803
EMAIL: archres@artinc.com
- 158 EAST SUPERIOR STREET
DULUTH, MINNESOTA 55802
PHONE 218-727-6481
FAX 218-727-6485
EMAIL: arshw@glbneturl.com

**EASTERN
HIGH SCHOOL
ADDITION/
REMODEL**

**ISD 709
DULUTH,
MINNESOTA**

PROJECT NO. 08-040
DATE 4-09-09
DRAWN TS
REVISIONS

**DESIGN
REVIEW**



SITE PLAN

DRAWING NUMBER
**SW
2.5**



**Independent School District #709
Eastern High School**



ARCHITECTURAL
RESOURCES • INC.



PROPOSED FIRST FLOOR PLAN
SCALE 1/8" = 1'-0"

Johnson Controls
JOHNSON CONTROLS, INC.
PROFESSIONAL SERVICES GROUP
487 Apple Boulevard
Duluth, MN 55811
Tel: 218-727-8666

ARCHITECTURAL RESOURCES INC.

- ARCHITECTURE
- ENGINEERING
- LANDSCAPE ARCHITECTURE
- INTERIOR DESIGN

WEB SITE: www.artinc.com
769 EAST HOWARD STREET
DULUTH, MINNESOTA 55810
PHONE: 218-262-6865
FAX: 218-722-6803
EMAIL: artinc@artinc.com
129 EAST SUPERIOR STREET
DULUTH, MINNESOTA 55803
PHONE: 218-727-8448
FAX: 218-727-8463
EMAIL: artinc@bigdaddys.com

EASTERN HIGH SCHOOL ADDITION/REMODEL

ISD 709 DULUTH, MINNESOTA

PROJECT NO. 08-040
DATE: 4-09-09
DRAWN: XX
REVISIONS:

DESIGN REVIEW



OVERALL FIRST FLOOR

DRAWING NUMBER
2
FP 1

© Strategic Solution Engineering, 2008



**Independent School District #709
Eastern High School**



ARCHITECTURAL
RESOURCES • INC.



- Mechanical, Custodial, and Support
- School and Community
- LMC and Guidance
- General Purpose Classrooms
- Music
- STC
- Career/Technical Education
- Science
- Computers
- Special Education
- Administration and Support
- Circulation
- Unexcavated

PROPOSED SECOND FLOOR PLAN

SCALE: 1/8" = 1'-0"



Johnson Controls
JOHNSON CONTROLS, INC.
PROFESSIONAL SERVICES GROUP
487 Apple Boulevard
Duluth, MN 55811
Tel: 218-727-4866

ARCHITECTURAL RESOURCES INC.

- ARCHITECTURE
 - ENGINEERING
 - LANDSCAPE ARCHITECTURE
 - INTERIOR DESIGN
- WEB SITE: www.arinc.com
754 EAST HOWARD STREET
HIBING, MINNESOTA 55746
PHONE: 218-263-0568
FAX: 218-722-6803
EMAIL: archres@arinc.com
128 EAST SUPERIOR STREET
DULUTH, MINNESOTA 55802
PHONE: 218-727-8480
FAX: 218-727-8483
EMAIL: archres@digitalart.com

**EASTERN HIGH SCHOOL
ADDITION/
REMODEL**

**ISD 709
DULUTH,
MINNESOTA**

PROJECT NO. 08-040
DATE 4-09-09
DRAWN XX
REVISIONS

DESIGN REVIEW



KEY PLAN

OVERALL SECOND FLOOR

DRAWING NUMBER

**3
FP 2**

© Strategic Solution Engineering, 2008



**Independent School District #709
Eastern High School**



ARCHITECTURAL
RESOURCES • INC.



JOHNSON CONTROLS, INC.
PROFESSIONAL SERVICES GROUP
4827 Arpark Boulevard
Duluth, MN 55811
Tel: 218-727-8996



ARCHITECTURAL
RESOURCES INC.

- ARCHITECTURE
- ENGINEERING
- LANDSCAPE ARCHITECTURE
- INTERIOR DESIGN

WEB SITE: www.arima.com
704 EAST HOWARD STREET
BERGON, MINNESOTA 55746
PHONE 218-263-0868
FAX 218-726-8903
EMAIL: archres@arima.com
158 EAST SUPERIOR STREET
DULUTH, MINNESOTA 55802
PHONE 218-727-8401
FAX 218-727-8403
EMAIL: archres@pinternet.com

**EASTERN
HIGH SCHOOL
ADDITION/
REMODEL**

**ISD 709
DULUTH,
MINNESOTA**

PROJECT NO. 08-040

DATE 4-09-09

DRAWN XX

REVISIONS

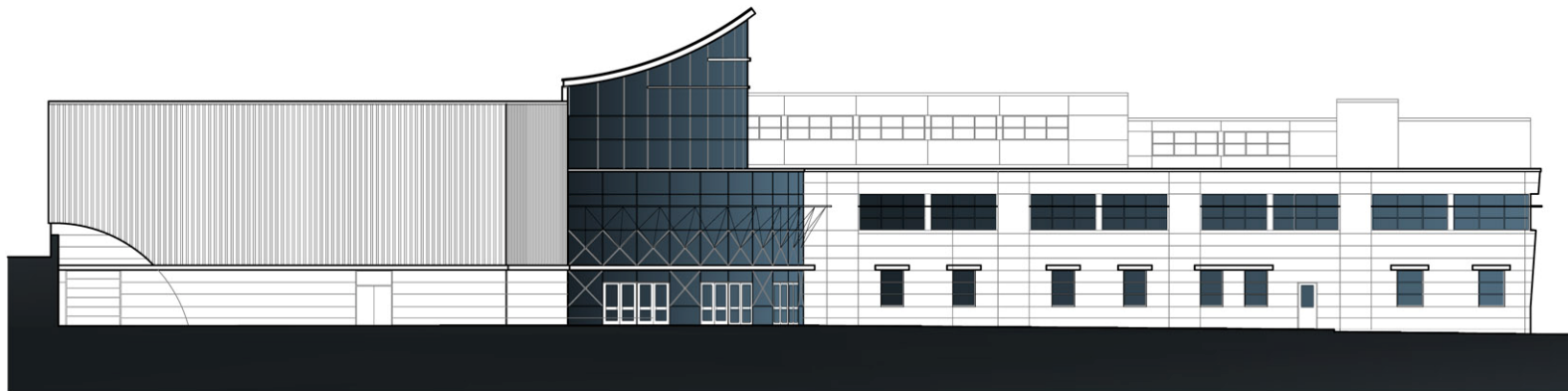
DESIGN
REVIEW



KEY PLAN

EXTERIOR
ELEVATIONS

DRAWING NUMBER



PROPOSED SOUTH EXTERIOR ELEVATION

SCALE: 1" = 20'-0"