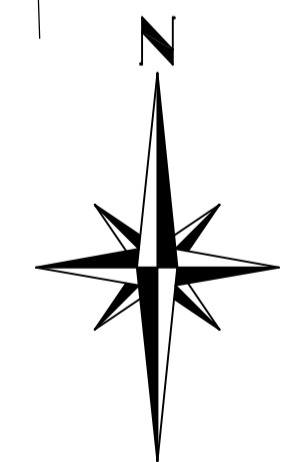
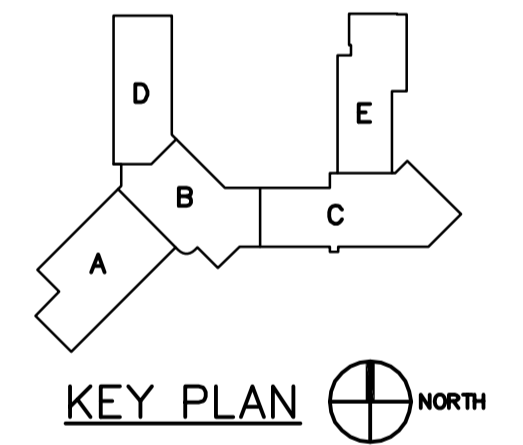


LOWELL ELEMENTARY SCHOOL

2000 Rice Lake Road
Duluth, MN 55811

I HEREBY CERTIFY THAT THIS PLAN, SPECIFICATION, OR REPORT WAS PREPARED BY ME OR UNDER MY DIRECT SUPERVISION AND THAT I AM A DULUTH LICENSED PROFESSIONAL ENGINEER UNDER THE LAWS OF THE STATE OF MINNESOTA.

NAME: PETER J. MARTHALER
SIGNATURE: *P. Marthaler*
DATE: 11/21/08 LIC. No. 45009



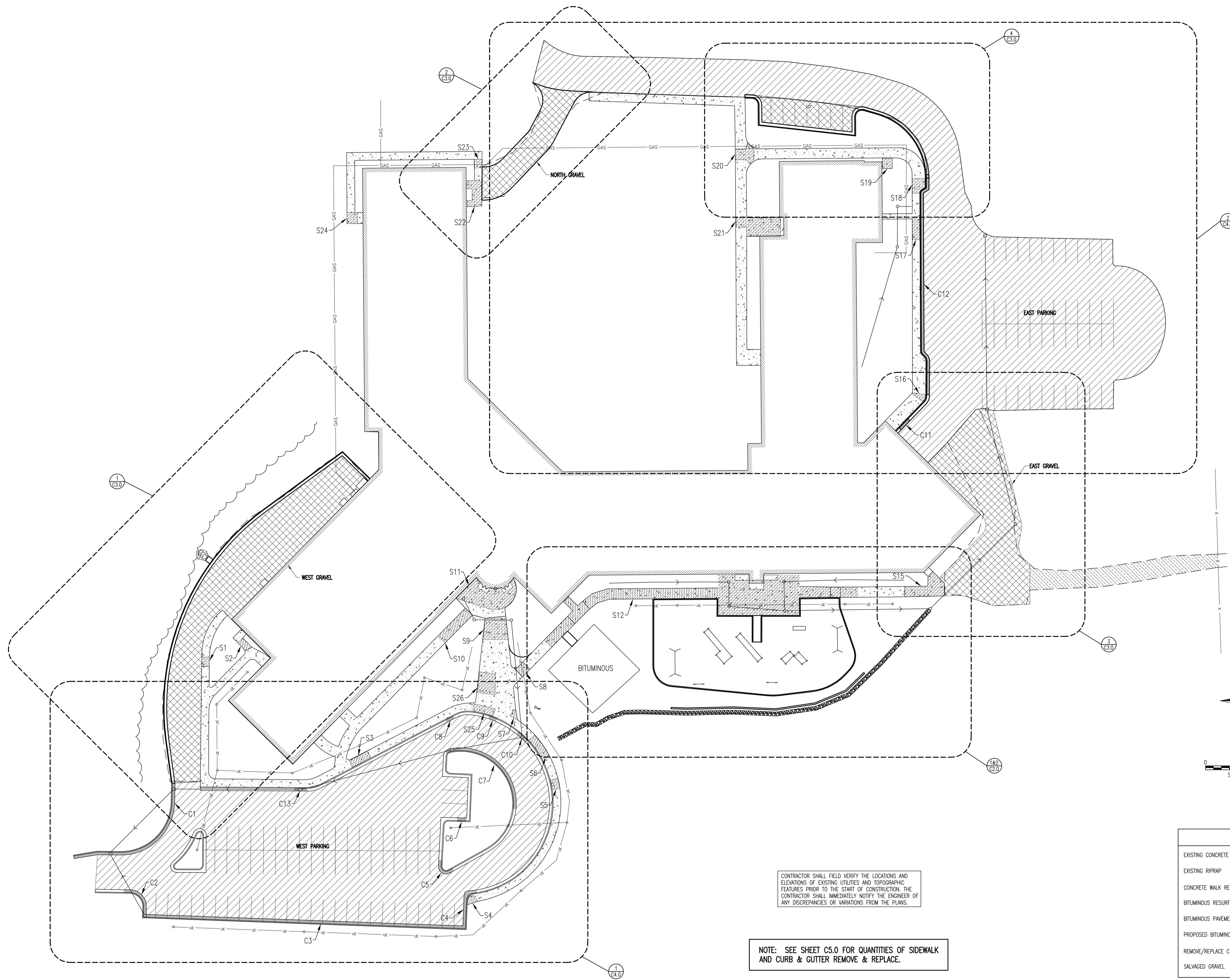
0 30 60
SCALE IN FEET

LEGEND

EXISTING CONCRETE	
EXISTING RIPRAP	
CONCRETE WALK REMOVE/REPLACE	
BITUMINOUS RESURFACE	
BITUMINOUS PAVEMENT REPAIR	
PROPOSED BITUMINOUS	
REMOVE/REPLACE CURB & GUTTER	
SALVAGED GRAVEL	

CONTRACTOR SHALL FIELD VERIFY THE LOCATIONS AND ELEVATIONS OF EXISTING UTILITIES AND TOPOGRAPHIC FEATURES PRIOR TO THE START OF CONSTRUCTION. THE CONTRACTOR SHALL IMMEDIATELY NOTIFY THE ENGINEER OF ANY DISCREPANCIES OR VARIATIONS FROM THE PLANS.

NOTE: SEE SHEET C5.0 FOR QUANTITIES OF SIDEWALK AND CURB & GUTTER REMOVE & REPLACE.



No.	Date	Revision Description

SITE LAYOUT

Project: 081170 DRAWING NUMBER:
Date: 11/21/08
Drawn by: KLG
Checked by: PJM **C1.0**