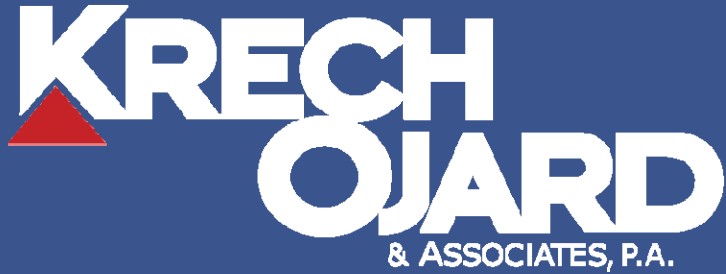




Lowell Elementary School
2008 Renovations & Maintenance Repairs
Independent School District # 709



DECEMBER 9, 2008



FOR REFERENCE ONLY

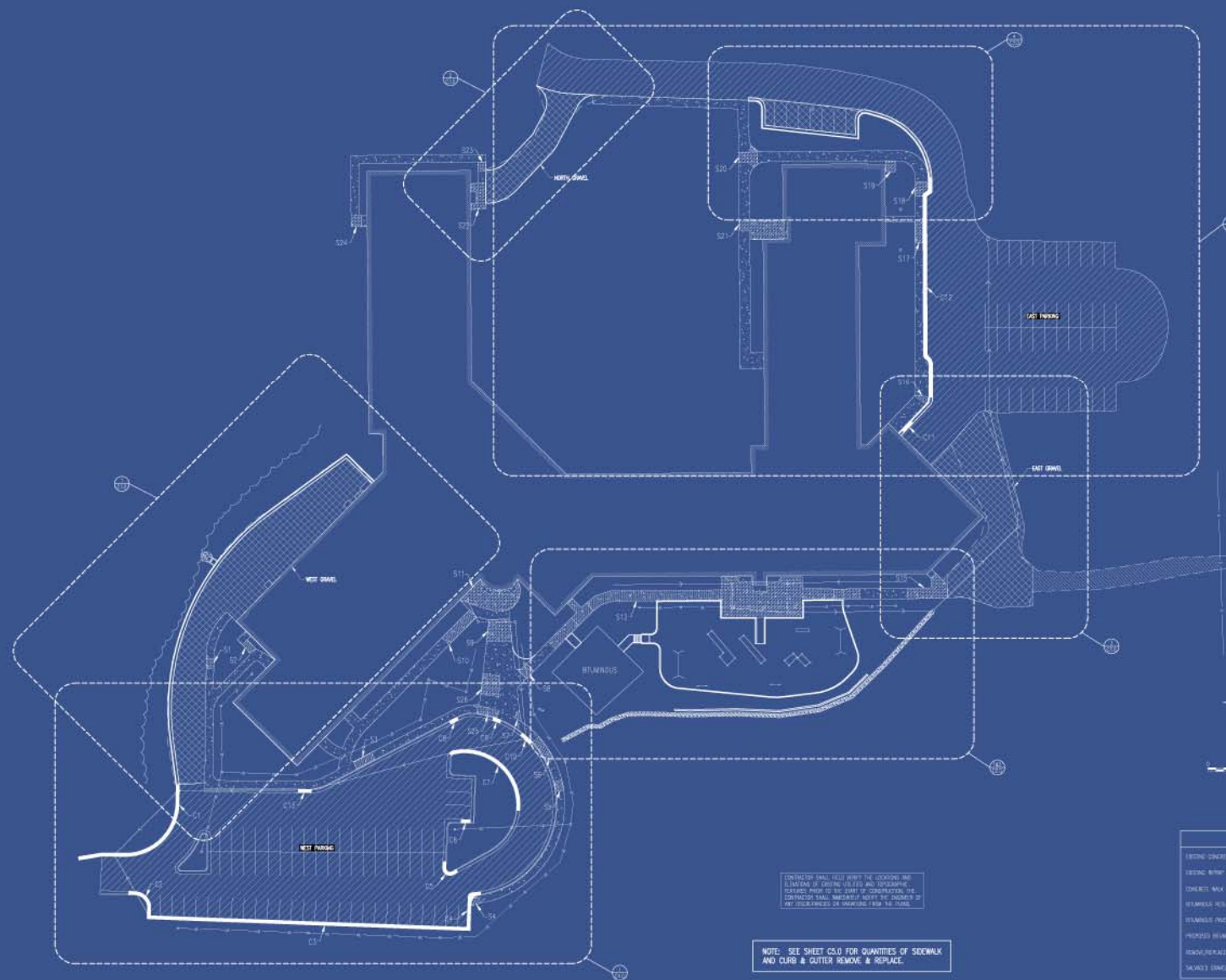
**LOWELL
ELEMENTARY
SCHOOL**

2000 Rice Lake Road
Duluth, MN 55811

I HEREBY CERTIFY THAT THIS PLAN, SPECIFICATION,
OR REPORT WAS PREPARED BY ME OR UNDER MY
DIRECT SUPERVISION AND THAT I AM A DULUTH
LICENSED PROFESSIONAL ENGINEER. SIGNATURE
NAME: **PETER J. MARSHALLER**
DATE: 11/21/07 SCALE: 1/8"=1'-0"



KEY PLAN



CONTRACTOR SHALL VERIFY THE LOCATIONS AND
DIMENSIONS OF EXISTING UTILITIES AND ADJUSTING
THEIR DEPTHS PRIOR TO THE START OF CONSTRUCTION. THE
CONTRACTOR SHALL IMMEDIATELY NOTIFY THE OWNER OF
ANY DISCREPANCIES OR INTERFERENCES FROM THE PLANS.

NOTE: SEE SHEET CS-0 FOR QUANTITIES OF SIDEWALK
AND CURB & CUTTER REMOVE & REPLACE.

LEGEND

EXISTING CONCRETE	[Hatched pattern]
EXISTING BITUM	[Hatched pattern]
CONCRETE MAX CURB/PLANK	[Hatched pattern]
SEWERAGE REPAIR/ASPH	[Hatched pattern]
SEWERAGE PAVEMENT BITUM	[Hatched pattern]
PROPOSED SIDEWALKS	[Hatched pattern]
PROPOSED PLANK (12" x 12")	[Hatched pattern]
SEWERAGE CONC.	[Hatched pattern]

No.	Date	Revision Description

SITE LAYOUT

Project: 08112
Date: 11/21/07
Drawn by: PJM
Checked by: PJM
C1.0



Lowell Elementary School
2008 Renovations & Maintenance Repairs
Independent School District # 709

**KRECH
OJARD**
& ASSOCIATES, P.A.

THANK YOU

www.krechojard.com



FOR REFERENCE ONLY